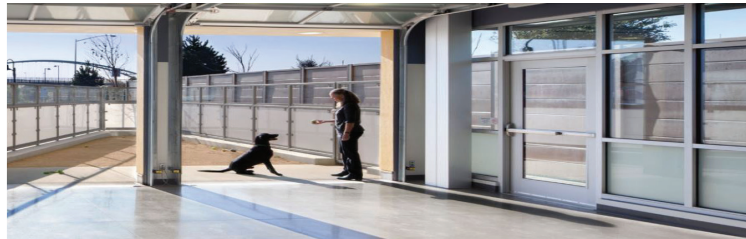
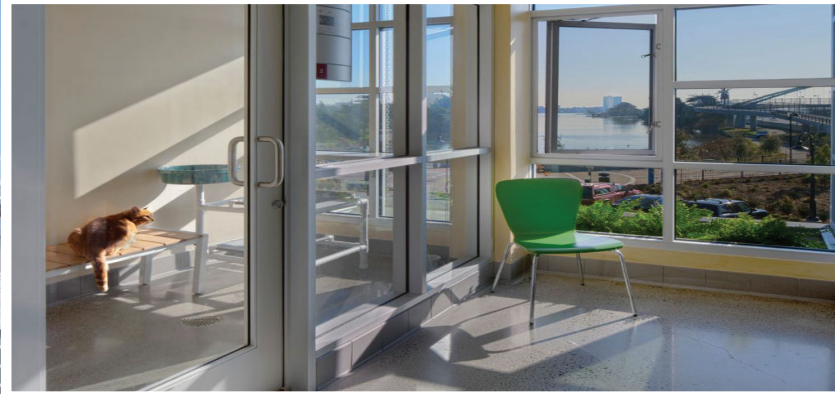


DONA SPRING ANIMAL CARE



DESCRIPTION OF PROJECT

This 11,700 sq. ft. building is two stories, mat slab steel frame, stucco exterior and has a vegetated roof. The new features include a medical suite for on-site spay and neutering, expanded facilities for protecting healthy animals and caring for sick ones, on-site fenced in play areas and indoor-outdoor kennels. This facility also includes animal intake and adoption areas, a “get acquainted” space for cats and dogs, a training classroom, and staff and volunteer space.

The project achieved LEED Gold Certification in 2014.

SELF-PERFORMED WORK

- earthwork
- site utilities
- concrete work
- rough and finish carpentry
- metal stud framing
- drywall

CLIENT:

City of Berkeley

ARCHITECT:

Burks Toma Architects

COMPLETED

March, 2013

CONSTRUCTED VALUE

\$7,652,449

DELIVERY METHOD

Design-Bid-Build

